

Claymark® Product Guide

Trim Boards, Siding, Mouldings, Posts & Beams
Durable, Protected & Primed to Last

claymark.com



CLAYMARK® PREMIUM RADIATA PINE PRODUCTS

THE NEXT GENERATION OF REAL WOOD

From the finest trim boards, siding and mouldings to large-scale exterior structural posts & beams, Claymark® offers a wide range of quality wood products, double-protected and primed for years of enjoyment.

Claymark® is New Zealand's largest manufacturer of premium pine products. For years, Claymark® has been a leading supplier to the US market of high-grade clear boards and primed exterior trim. Now, we are pleased to provide this same high-quality substrate in structural products.

Claymark® only uses the finest New Zealand grown radiata pine from carefully managed and certified plantation forests. Quality is paramount in everything Claymark® manufactures. Consistency and precision are ingrained in everything we do.



Protected Trim Boards, Siding and Mouldings



The next generation of durable-protected pine, precision manufactured from Claymark's premium Radiata Pine blocks.

Think of Claymark's Centurion® and Solid Gold® products as natural wood with superior protection. Grown in FSC® certified forests, our products are sustainably harvested and then protected with the patented Tru-Core® process — a wood protection program so advanced that we can offer a 50-year warranty and so safe that it has no off-gassing and can be used in any setting.

Beautiful Radiata Pine with the most advanced weatherproofing and durable protection system available

Protection Technology

Centurion and Solid Gold utilize the **Tru-Core®** process – the most advanced wood protection system in the world

- Unique carrier system penetrates microscopic channels in resins and glues
- 100% penetration of the Sapwood and Heartwood
- No damage to the wood structure
- No volatile organic solvents or harmful chemicals
- 3 EPA registered and globally recognized fungicides
- 2 EPA registered and globally recognized termiticides

The 4 Dimensions of Protection:

- Carrier, penetrant and fixation chemistry
- Boron – proven effective
- 5 decay and termite actives
- Performance synergy

The Tru-Core® Protection Process key benefits:

- 50-year warranty* against decay, rot & termites (including Formosan)
- Centurion® and Solid Gold® are FSC® certified – eligible for LEED points
- Durable and safe for both exterior and interior application
- No wood preservative field treatment needed on cut surface ends or drilled holes. Eliminates extra work in the field

New Generation Sealer

- Resists water uptake
- Resists resin/tannin bleed
- 100% Solids eco-friendly technology
- UV cured seal coat

100% Acrylic Primer & Undercoat

Claymark primer system utilizes new generation acrylic technology

- Waterborne technology
- 100% Acrylic composition
- All 4 sides are evenly coated
- A 5-year primer warranty*

The Solid Gold® Difference

When you need the absolute premium in pine trim-boards, siding and mouldings, call on Claymark's Solid Gold®. Harvested from pruned, mature trees, in FSC®-certified forests, Solid Gold® has no finger joints and no knots for a flawless presentation. It is protected with the patented Tru-Core® process for 50 years of protection from insects and mold.

*See written limited warranty.



Tru-Core® Benefits

- | | |
|---|---|
| 
FULL PENETRATION & PROTECTION TO THE CORE | 
PROTECTION NOT DIMINISHED BY END CUTS |
| 
PROTECTED AGAINST ROT, DECAY & TERMITES | 
NO KNOTS & ALWAYS CLEAR BOARDS |
| 
DURABLE FOR EXTERIOR & SAFE FOR THE INTERIOR | 
CUT SURFACES ONLY REQUIRE PRIMING |
| 
MINIMIZE NATURAL TENDENCY TO DISTORT | 
BACKED BY A 50-YEAR LIMITED WARRANTY* |
| 
WEATHER RESISTANT SYSTEM | 
SUPERIOR FINISH MADE TO LAST |

*See written limited warranty.

Claymark's Lineup of Premium Wood Products



Centurion® by claymark

Centurion® is the highest performing interior and exterior finishing system manufactured by Claymark® from New Zealand Radiata Pine. Centurion® is protected using the Tru-Core® durability process.



Solid Gold® by claymark

Solid Gold® is the "Gold Standard" for solid (no finger-joints) interior and exterior trim that utilizes the patented Tru-Core® durability protection process.

TRU-CORE® Protection Process Wood for Life®

CARRIER, PENETRANT AND FIXATION CHEMISTRY

BORON
Proven Effective in 50+ Years of Use



PERFORMANCE SYNERGY

5 DECAY & TERMITE ACTIVES
Used in All Major Window & Door Treatments and LOSPs

4 Dimensions of Protection with Complete Penetration of Sapwood and Heartwood

Claymark® Clear Radiata Pine Boards

Claymark® is New Zealand's largest manufacturer and exporter of premium pine products. Radiata Pine is a versatile and sustainable species. Combined with precision manufacturing and skilled staff, Claymark offers the best quality products to meet our customer needs.

Product Features

- 100% Solid Clear four sides
- No knots, no warp, no waste
- Quality kiln drying and milling process ensure superior finish
- Available in random length 8' – 16' units
- Outstanding tallies available – more than 75% 12' and longer!
- FSC® certified (FSC# SW-COC-003038)
- Perfect packaging protects product from moisture and dirt from the time it leaves New Zealand until you open the pack in your yard





Claymark® Profiles

C Centurion®
by claymark

Finger-Jointed

SG Solid Gold®
by claymark

Non Finger-Jointed



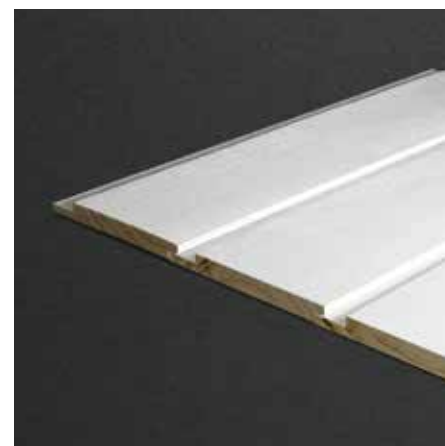
Center Match Nickel Gap 1x6

(C & SG)



Center Match Nickel Gap 1x8

(C & SG)



Channel Rustic 1x8

(C)



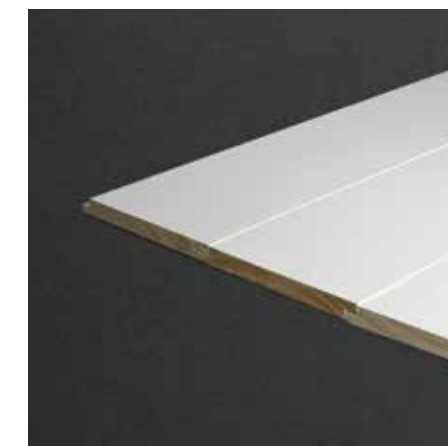
Edge and Center Bead 5/8x6

(C)



Shiplap 1x6

(C)



Shiplap 1x8

(C)



Edge and Center Bead 1x6

(C & SG)



Edge and Center Bead 1x8

(C)



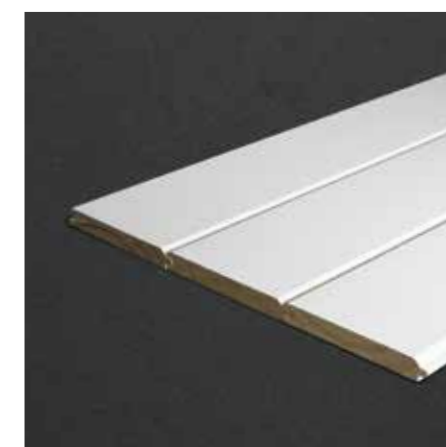
Edge and Center Bead 5/8x4

(C & SG)



Shiplap 1x10/1x12

(C)



WP4 1x6

(C & SG)



Bevel Siding 1/2x6

(C)

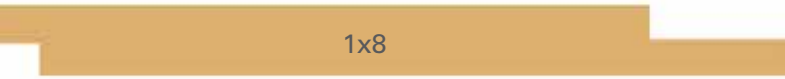
Claymark® Patterns & Profiles



CENTER MATCH NICKEL GAP 1/8" GAP



CHANNEL RUSTIC



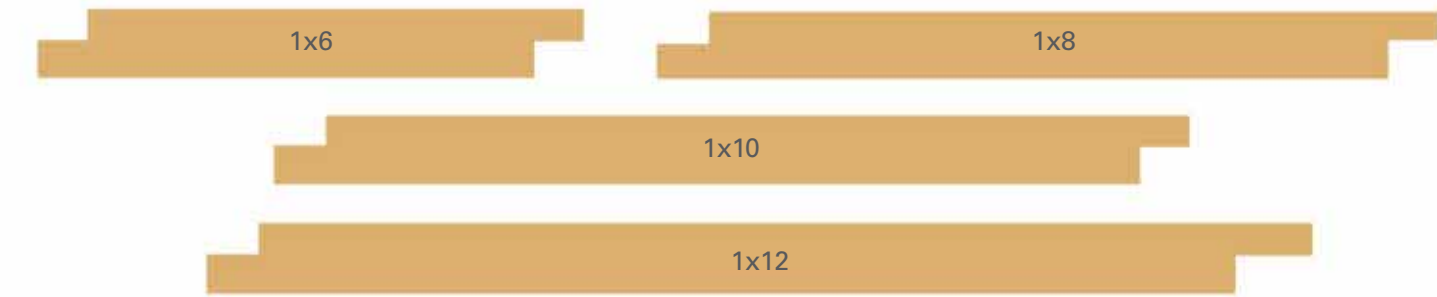
BEVEL SIDING



EDGE & CENTER BEAD



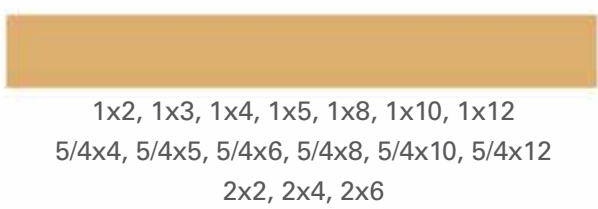
SHIPLAP (Rough sawn one side)



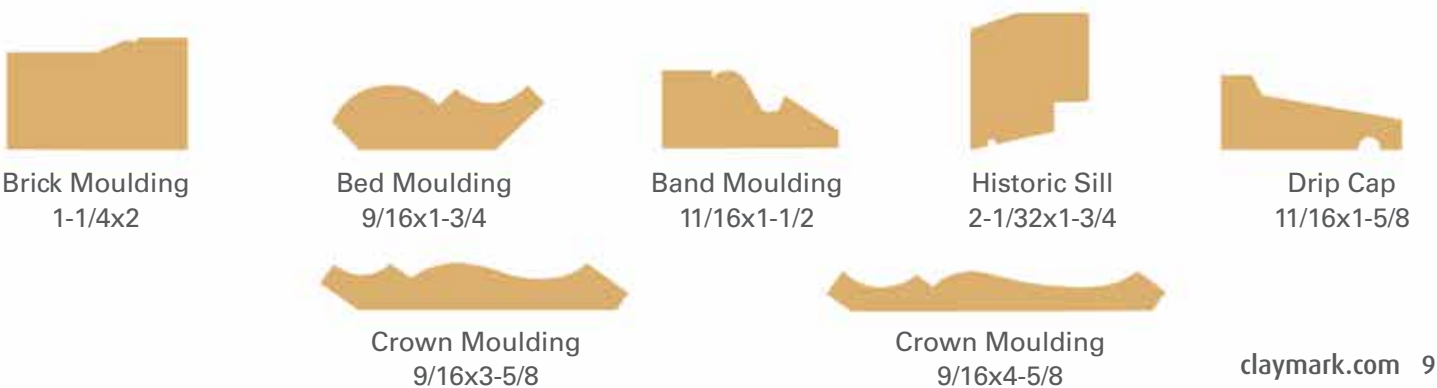
WP4



S4S



MOULDINGS





Treated and Primed Posts & Beams



Tru-Pine® combines strength and durability with the enduring character and beauty of timber.

Tru-Pine® is manufactured from Radiata Pine from New Zealand plantation forests. It is finger-jointed and laminated* for defect-free strength and straightness, treated to withstand termites, rot, and decay — delivered primed and undercoated. Manufactured for outdoor use and full exposure.

Why Choose Tru-Pine®

- Strong and durable — Structurally graded
- Protected against fungal decay & termites
- Primed and undercoated — Ideal for outdoor use
- Defect-free — Surfaced smooth finish
- Strict quality control
- Proven history
- FSC® Certified

Tru-Pine® is pre-primed and ready to paint. The posts are treated for in-ground contact and hold a lifetime warranty*. All beams, rafters and purlins are treated for above ground and have a 30-year warranty.

*See written limited warranty.



Tru-Pine® Size, Length & Packet Information

Size	Net	Lengths	Treatment Use Category	Strength FD	Strength MOE
2x2	1.65x1.65	12', 18', 20'	UC3A	not rated	not rated
2x3	1.65x2.60	12', 16', 18', 20'	UC3A	not rated	not rated
2x6	1.65x5.43	12', 16', 20'	UC3A	2611	1.14 e6
2x8	1.65x7.28	16', 20', 23'6"	UC3A	2611	1.14 e6
2x10	1.65x9.06	16', 20'	UC3A	2611	1.14 e6
3x6	2.56x5.51	12', 16', 20', 23'6"	UC3A	2756	1.16 e6
3x8	2.56x7.09	12', 16', 20', 23'6"	UC3A	2756	1.16 e6
3x10	2.56x9.45	16', 20', 23'6"	UC3A	2756	1.16 e6
3x12	2.56x11.42	16', 20', 23'6"	UC3A	2756	1.16 e6
4x8	3.46x7.09	16', 23'6"	UC3A	2756	1.16 e6
4x10	3.46x9.45	16', 20', 23'6"	UC3A	2756	1.16 e6
4x12	3.46x11.41	16', 20', 23'6"	UC3A	2756	1.16 e6
4x4	3.46x3.46	8', 10', 12', 20'	UC4B	2756	1.16 e6
5x5	4.41x4.41	12', 20'	UC4B	2756	1.16 e6
6x6	5.2x5.2	8', 10', 12', 20'	UC4B	2756	1.16 e6
8x8	7.24x7.24	10', 12'	UC4B	2756	1.16 e6

All material is S4S

All material is pre-primed

Installation & Warranty



Claymark's reputation for producing the highest quality, reliable products ensures that they are trusted by industry professionals.

Claymark[®] products have been finished with specialized acrylic primer. For the best results when installing Claymark[®] products, follow these simple guidelines and ensure that industry 'best practice' standards are met throughout all areas of construction.

Storing & Handling

While storing Claymark[®] products, it is important to keep it dry and off the ground at a minimum of eight inches. Store Claymark[®] boards flat and not on uneven surfaces. If you're storing it outside always use a waterproof cover, but allow good airflow to avoid condensation. When handling Claymark products, always take care to minimize damage.

Installation

Ensure cut ends and mitre cuts are primed with 100% acrylic paints. Always follow the paint manufacturer's label instructions. Hand nail, where possible, to help protect the factory coating. In cases when nail gun use is required, make sure to adjust to the correct pressure to achieve a flush finish.

Finishing

Before painting, ensure all loose material and dirt has been removed from the product. Finish with two coats of 100% acrylic paint, applied as soon as possible but no more than 120 days after installation, allowing to dry between coats. When using putties, mastics and sealers, always ensure they are compatible with acrylic-based paints. If you are unsure, seek advice from the product manufacturer.

Heat

As wood is a natural product, and resin is a natural component of pine, if Claymark[®] products are exposed to extreme heat, especially when painted in a dark color, resin bleed may occur. By following the paint manufacturer's recommendations, the potential for resin bleed can be reduced; avoiding darker colored paint or high-gloss finishes will also help.

Moisture

Proper flashing is required – to ensure that water sheds use flashing to intercept and direct the flow of water away from the structure. Any horizontal application of exterior sidings (e.g., gap sidings) must be installed to allow for proper water run-off.

To protect against dimensional change, applying the manufacturer's recommended painting specification will provide protection against moisture uptake. However, should Claymark[®] products be exposed to moisture prior to final painting, a primer will not protect against moisture uptake. Should this result in temporary dimensional swelling, it is essential the product be given time to dry out and return to its natural moisture levels before the final coats are applied. *See written limited warranty.

Limited Warranty

For fifty (50) years after the date of its sale by Claymark[®], Claymark[®] product will not become structurally unserviceable because of fungal decay/rot or termite attack, and for five (5) years after the date of its sale by Claymark[®], the primer coating applied to Claymark[®] products at the time of sale will not erode or experience paint primer peeling so that the wood substrate is exposed.

The Limited Warranty applies only to Claymark[®] products that are installed in full compliance with Claymark's instructions and recommendations and only if the Conditions of Warranty Coverage, (see written limited warranty) are complied with.

The Limited Warranty extends only to the first owner and not to any subsequent purchasers or users of (a) the Claymark[®] product or (b) the structure into which it is installed. The Limited Warranty may not be transferred in whole or part to any subsequent owner or tenant of the real property on which the Claymark[®] product was installed.

* For Tru-Pine[®] Post & Beam warranty/installation details, refer to claymark.com.



New Zealand's largest manufacturer
and exporter of premium pine products.



TRU-CORE
Wood for Life®



Claymark® products are manufactured from sustainably grown FSC certified (FSC-C008215) New Zealand plantation Radiata Pine.

Distributed By:



Lakeville, MA: 1.800.752.0121 • Albany, NY: 1.800.827.2446 • wtrask.com